



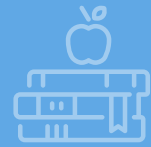
# CORE

Powered by The Rogers Foundation

## Our Process



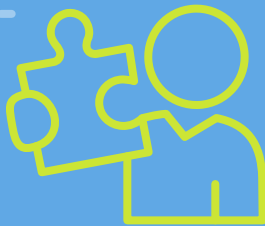
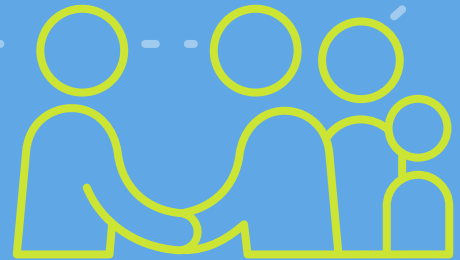
Children are identified in 5th grade.



1

2

Core staff performs a home visit and parents complete a needs based assessment which informs an individualized success plan for each family.

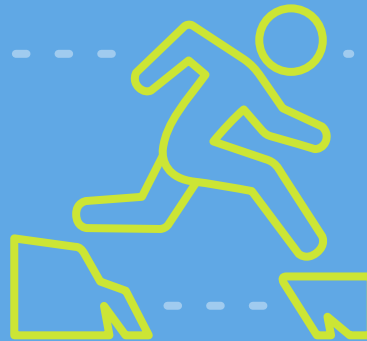


New Scholars are on-boarded and start 6th grade programming.

3

4

Scholars work on literacy, math skills, and character education in middle school.



Scholars enter high school and focus on career exploration, college readiness, and character/leadership development.

5

6

Scholars graduate from high school and join Core's alumni network.

